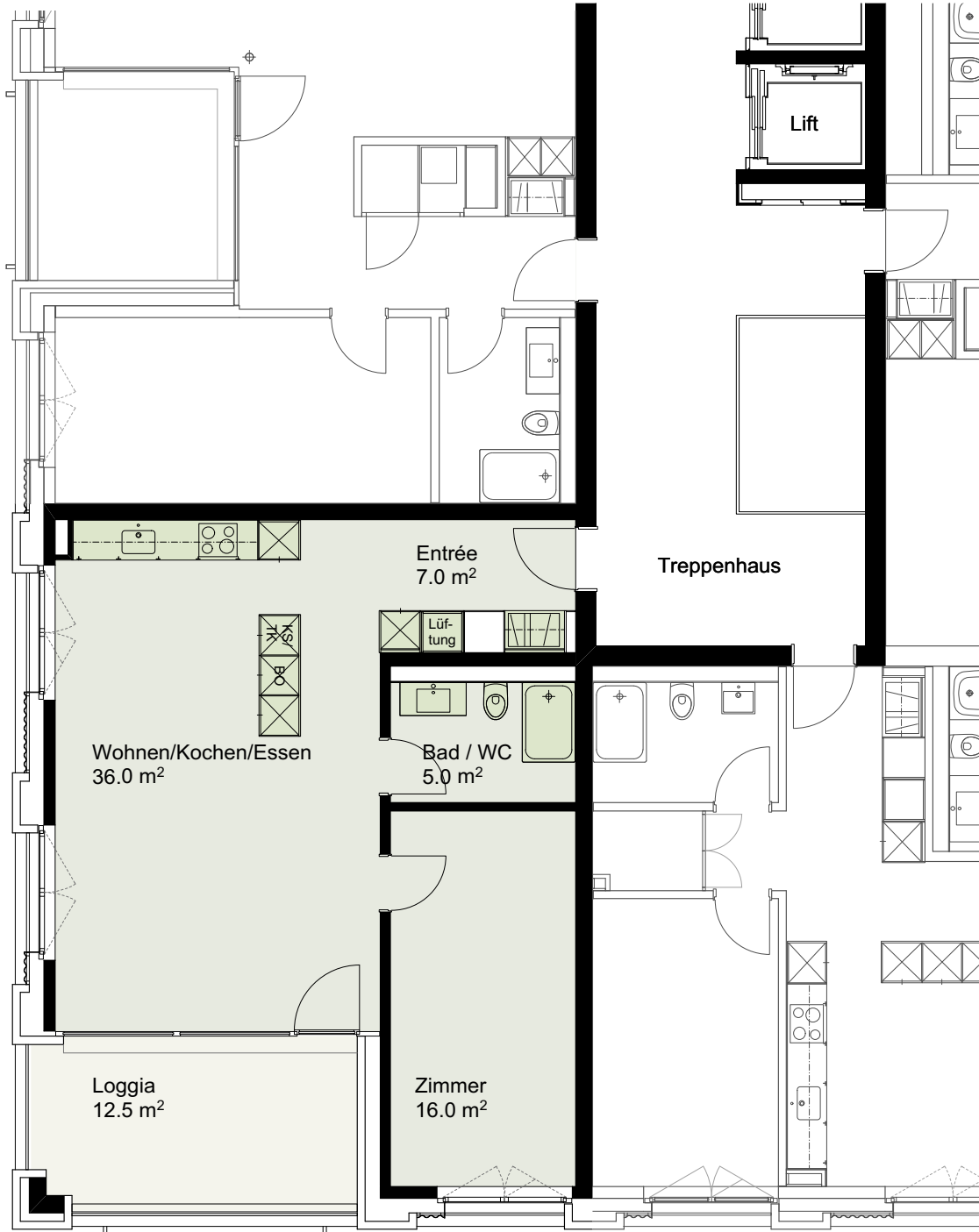


| | |
|------------------------|------------------------|
| Etage | 5.Obergeschoss |
| Wohnfläche | 64.0 m ² |
| Loggia | 12.5 m ² |
| Gebäude Nr. / Whg.-Nr. | Waldegstrasse 34 / 501 |



Masstab 1:100

0 1m 3m 5m



www.livingandmore-liebefeld.ch